

# CADENAS DE RODILLOS CON PIVOTES

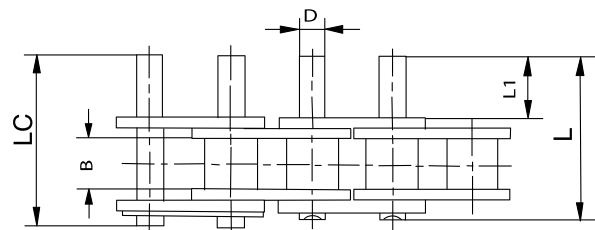
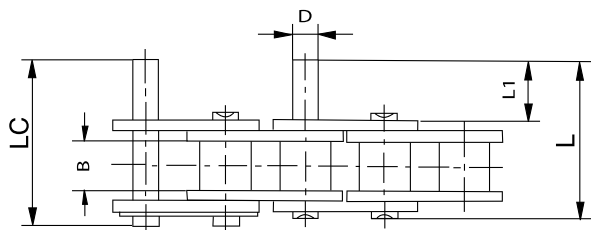
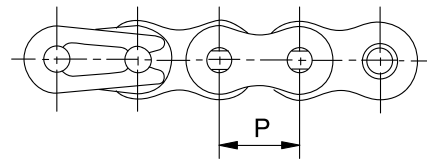
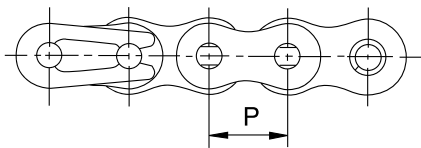
Roller chains with extended pins

Chaînes à rouleaux avec axes débordants



Cada 2 pasos  
Every 2 pitches  
Tous les 2 pas

Todos los pasos  
Every pitches  
Tous les pas



Referencia Reference Référence	P	B	D	L1	L	Lc
DIN/ISO	mm	mm	mm	mm	mm	mm
*06B	9,525	5,72	3,28	11,3	23,4	24,4
08B	12,700	7,75	4,45	15,5	31,2	32,2
10B	15,875	9,65	5,08	17,8	36,1	37,5
12B	19,050	11,68	5,72	20,7	42,0	43,6
16B	25,400	17,02	8,28	33,2	68,0	69,3

\* Malla recta / Straight plates / Plaques droites

Disponibile en acero inoxidable / Also available in stainless steel / Disponible en acier inox

Para otras medidas consultar / Other measures upon request / Fabrication sur mesure: nous consulter